

LIQUID LEVEL GAUGES



SERIES LG2-T ARMORED TUBULAR LIQUID LEVEL GAUGE W. 90° CONNECTIONS



APPLICATIONS:

For low to medium pressure applications up to 500 psig, including oil or fuel storage tanks, cooling tower water tanks, and boiler feedwater tanks.

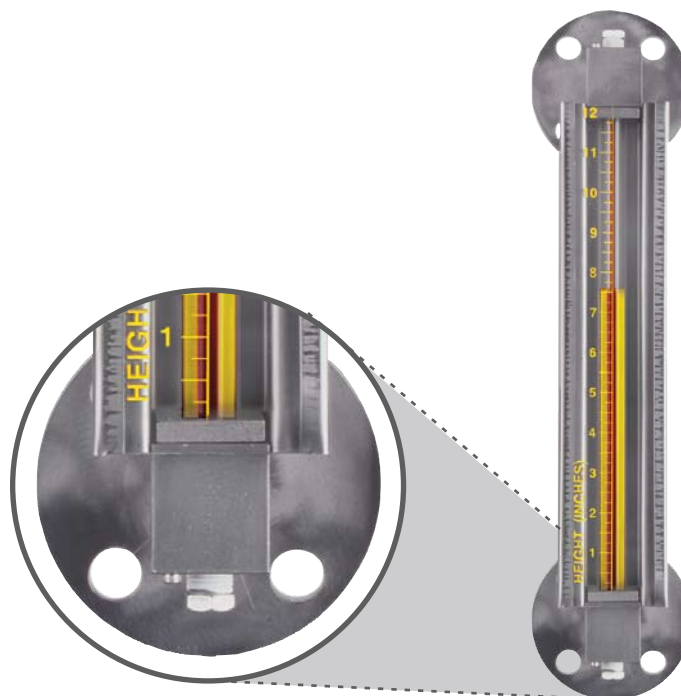
FEATURES

The Series LG1-T Series Level Gauge features 90 degree connections for ease of installation. The Gauge is fitted with inline 1/4" FNPT vent and drain connections. Vent and drain connections are inline for routine maintenance of the level gauge.

The centerline dimensional tolerance is $\pm 1/16"$. This assures that the gauge will fit the mounting connection of the tank.

The sight tube of the Series LG1-T Level Gauge is totally protected. Three sides of the gauge are enclosed with a metal frame, while the face of the gauge is protected with a polycarbonate shield. This shield can be custom calibrated to read tank volume or any other calibration. Refer to the Shield Specifications page (pg 12) to see the assortment of standard shield options.

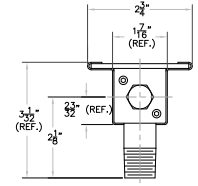
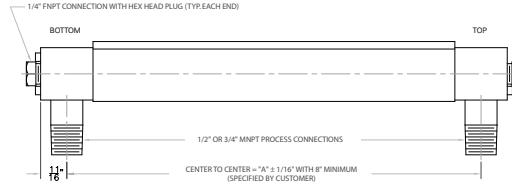
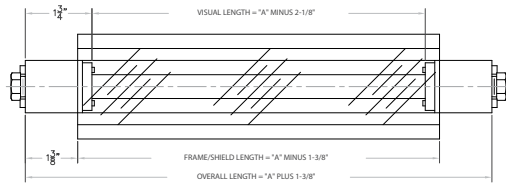
The gauge frame is available in carbon steel or 304 stainless steel. A wide variety of wetted materials are available, including carbon steel, 316 stainless steel, alloy 20, Hastelloy C-276, PVC, CPVC, Kynar, and high density polyethylene.



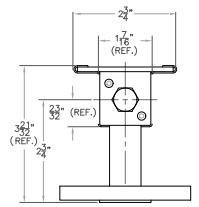
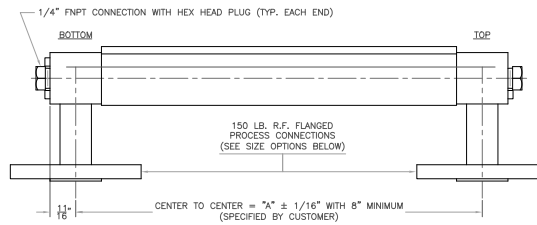
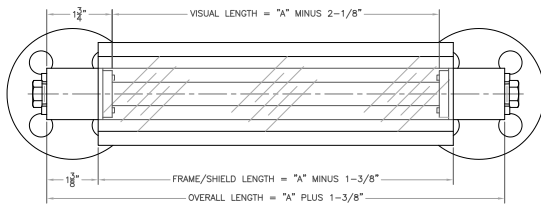
Optional Flange Connection

SIGHTGLASSES - SIGHT FLOW INDICATORS - LEVEL GAUGES - LIGHT FIXTURES - ACCESSORIES

SERIES LG2-T LEVEL GAUGE WITH THREADED PROCESS CONNECTIONS



SERIES LG2-F LEVEL GAUGE WITH OPTIONAL FLANGED CONNECTIONS



ORDERING SYSTEM Series LG2-T Level Gauge

REQUESTED BY: _____ COMPANY: _____

ADDRESS: _____ CITY: _____ STATE: _____ ZIP: _____

PHONE: _____ FAX: _____ EMAIL: _____

LG2-				
Gauge Style LG2-T = 90° MNPT LG2-F = 90° Flanged	Process Connections M50=1/2" MNPT M75=3/4" MNPT F50=1/2" FNPT F75=3/4" FNPT FL50=1/2" FLANGE FL75=3/4" FLANGE FL1.0=1" FLANGE FL1.5=1.5" FLANGE FL2.0=2" FLANGE	Center to Center Dimension (inches) Material of Construction C=Zinc Plated Carbon Steel A=Stainless Steel PC=PVC Wetted Parts w/Carbon Steel Frame PS=PVC Wetted Parts w/Stainless Steel Frame Other (Please Specify)	Seal Material V=Fluorocarbon A=Aflas B=Buna-N T=FEP Encapsulated Silicone E=Ethylene Propylene	
Shield Options* L=Clear Polycarbonate H=Height Scale RH=Rate Height Scale MH=Metric Height Scale MRH=Metric Rate Height Scale M=Expanded Metal Guard	Sight Tube Options** GS=5/8" O.D. Glass (Standard) RL=5/8" O.D. Redline Glass	Maximum Working Pressure (PSIG)	Maximum Operating Temperature (°F)	Steam S=Steam Application NS=Non-Steam Application

• Example Order Number: LG1-T-M50-68-PS-T-MH-GS-150-120-NS

* See page 12 for shield descriptions

** Based on application data provided, PAPAILIAS will select the appropriate sight tube material, i.e. high pressure glass.

